



JF

Carpets with Julian Foye

We make it easy for you

We make it easy for you



We go the extra mile.

Our experts do not insist on an empty room. We will move heavy furniture in and out, install your new carpet with care and even clean and Hoover afterwards.

Measure and fitting are free of labour charges, subject to a minimum value.

For your convenience, we can split the days we fit your carpet to work around you. If you live away from Cornwall, we can complete the work in your absence.



For a small charge, we will also dispose of your old carpet responsibly. None of the waste we take goes to landfill.

“We refer to the carpet we had laid. We wanted to say a big “thank you” to Darren, Stuart and his apprentice for a super job done with obvious expertise, humour and helpfulness. It turned an upheaval into an experience which was both enjoyable and very satisfying. They went the extra mile by moving beds in and out which was a relief and really invaluable.”

Mr & Mrs K., St Kew., Cornwall

Underlay and grippers



Grippers.

As tempting as it is to not choose the best grippers, the width of the gripper and the extra number of pins means we can fit the carpet tighter and it should not ruckle. Good quality grippers anchors carpets securely.



Underlays.

Underlays provide an excellent foundation for your new carpet to help prevent wear and tear, increasing the life of the carpet and maintaining its looks.

A good underlay can elongate the lifetime of a quality carpet up to 40%.

We tape underlay together so there are no gaps, making it act like a carpet under a carpet.

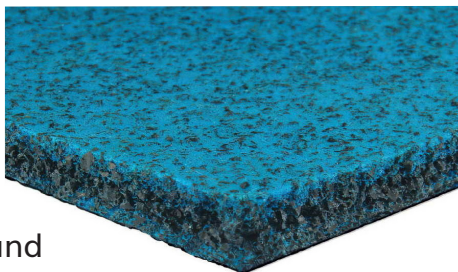


Types of underlay



Super Duralay.

A solid rubber underlay that is environmentally friendly as it is made of recycled tyres. Ideal for concrete floors, providing insulation and sound proofing. Ideal for heavy traffic areas including stairs.



Treadmore.

A more luxurious version of the Super Duralay, for a softer, bouncier feel, you can really feel the difference.

Axfelt.

The combination of rubber and felt of an Axfelt underlay is softer and more luxurious than our other underlays. Axfelt can be glued or stapled in place, depending on the sub floor. It delivers excellent sound and warmth insulation, helping reduce noise and heating bills.

Heatflow.

When underfloor heating is in place and a fitted carpet is required, Heatflow underlay combined with a recommended carpet will allow the warmth to flow through.



Choosing your carpet



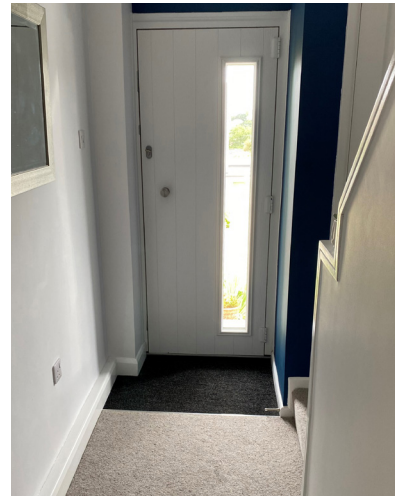
Measuring for your new carpet.

Julian Foye will send out an expert to measure your carpets. At this point, they will discuss with you what work needs to be done and what is the best method of fitting your new carpet.

They will assess if new underlay and grippers are required.

Grand entrances.

We advise installing a good quality mat ribbing in the main entrance of your home to prevent soiling of the carpets. This mat helps to trap moisture, dirt and small stones and provides a natural area to remove your shoes before entering your home.



Why choose wool carpets?



- Environmentally friendly and sustainable fibre
- Hard wearing and long lasting
- Retains its pile shape and height
- Recovers quickly from furniture compression
- Is naturally flame retardant
- Warm and insulating



Wool carpets offer a comprehensive range of benefits, from the luxurious comfort underfoot, to providing a safer environment through their flame-resistant natural properties.

Highly durable, resilient and easy to clean; wool has unique, natural reshaping attributes that helps it to maintain its exceptional appearance. Wool carpets have a remarkable ability to remain vibrant in colour and condition over a long period of time.

With renewable and sustainable qualities, wool reduces the impact on our planet - so, buying a wool carpet makes perfect environmental sense.



Caring for your carpet

With the correct care, your wool carpet will last a long time and keep it looking its very best.

- Hoover regularly.
- Don't pull on tufts/loose ends. Simply trim with scissors.
- Treat stains immediately, new stains are easier to remove than old ones.
- If you experience a spillage, don't rub, blot.

“We just wanted to thank you for all your help in arranging our recent carpet purchase and fitting. The Team who came and fitted the carpets were so efficient and polite they were a pleasure to have in our home. I just wanted to compliment them on the way they were teaching the trainee. As a retired trainer of some 40 years it was refreshing to see an employer actively supporting the learning of the next generation. Please pass on our thanks to the team and thank you again for all you undertook.”

A & M Rivers, Cornwall



www.julianfoye.co.uk

TRURO
TR1 1SB
01872 222226

ST AUSTELL
PL25 3HQ
01726 70711

WADEBRIDGE
PL27 6DA
01208 814242

HAYLE
TR27 4DY
01736 755700