

Julian Foye

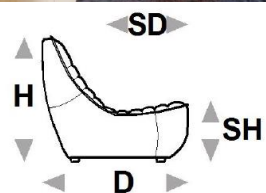
Fedora

www.julianfoye.co.uk

TRURO Tregolls Road, TR1 1SB 01872 22226
 ST AUSTELL 8 Manfield Way, Holmbush, PL25 3HQ 01726 70711
 WADEBRIDGE Bridgend, PL27 6DA 01208 814242
 HAYLE 4 Fore Street, Copperhouse, TR27 4DY 01736 755 700



Curvy, simple shapes featuring a special lozenge design to create an evergreen, fancy style. A modular model, completely finished on all sides in leather or fabric, the Fedora can be combined to create an endless number of configurations, by joining linear elements or corner pieces, chaise longues and ottomans. With Foam seat and back interiors. This model has a solid wood frame with an interlocking webbing system.



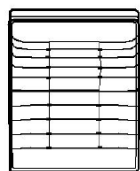
Chair
 L:105 H:88 D:102
 SH:40 SD:56 cm

2 Seater
 L:180 H:88 D: 102
 SH:40 SD:56 cm

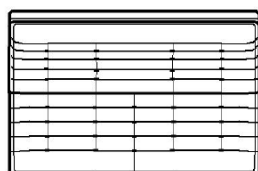
3 Seater
 L:200 H:88 D:102
 SH:40 SD:56 cm

Right Hand Facing Arm
 L:92 H:88 D:102
 SH:40 SD:56 cm

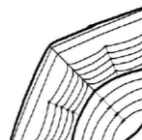
Left Hand Facing Arm
 L:92 H:88 D:102
 SH:40 SD:56 cm



Chair Without Arm
 L:81 H:88 D:102
 SH:40 SD:56 cm



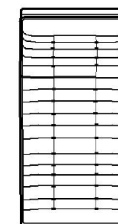
2 Seater with no Arms
 L:160 H:88 D:102
 SH:40 SD:56 cm



Corner Unit
 L:115 H:88 D:102
 SH:40 SD:56 cm



Small Rectangular
 Footstool
 L:52 H:42 D:87



Chaise Longue
 L:81 H:88 D:162
 SH:40 SD:56 cm



Rectangular Ottoman
 L:81 H:42 D:87